



656 Ellis Oak Ave. | James Island



Table of Contents

FOR FURTHER INFORMATION

LAUREN A. WATKINS, ASSOCIATE

843.224.3990 | lwatkins@twinriverscap.com

KEITH MAYFIELD, SR ASSOCIATE

843.437.0720 | kmayfield@twinriverscap.com

656 Ellis Oak Ave. Suite 201
Charleston, SC 29412

www.twinriverscap.com

656 Ellis Oak Avenue
Charleston, SC 29412

Property Information	3
Locator Map	4
High Aerial	5
Low Aerial	6
Floor Plan	7
Pricing Information	8
Photos	9
Photos	10
About Us	11



Property Information

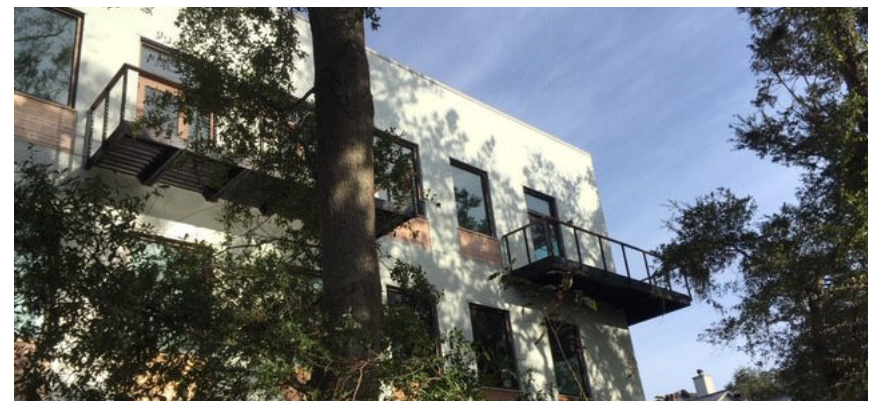
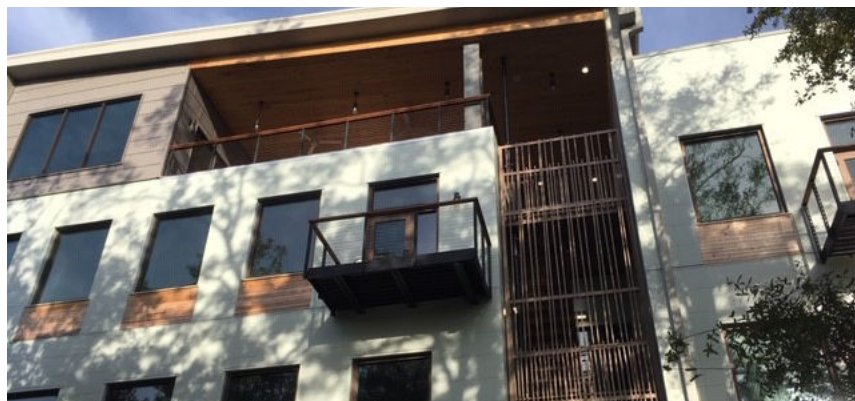
Property and Location Highlights

HIGHLIGHTS

New construction of a brand-new building designed by local architect David Thompson. The entire first floor of the building is offered by [workspace](#) with flexible office solutions for every need, including executive office suites, co-working office space, and dedicated desk spaces available. The open, airy plan is an invitation to collaborate and provides a safe environment for the connectivity with peers that cannot be replicated in an online environment.

The waterfront property offers great marsh views of Ellis Creek with large windows and natural light. Excellent location on James Island near Lowe's, Harris Teeter, and USPS. Extremely convenient to downtown, with only 1 stoplight traveling via the James Island connector.

- > **NEW CONSTRUCTION**
- > **LARGE CONFERENCE ROOM WITH TV FOR PRESENTATIONS**
- > **24/7 KEY CARD ACCESS**
- > **ELEVATOR**
- > **CAFE; UNLIMITED COFFEE**
- > **KITCHEN**
- > **LOUNGE AREA**
- > **3 PHONE BOOTHS**
- > **PRINTER / COPIER / SCANNER**
- > **WIFI**
- > **ONSITE PARKING**





Locator Map



3 miles from property to downtown

**656 ELLIS OAK AVE.
CHARLESTON, SC**



High Aerial





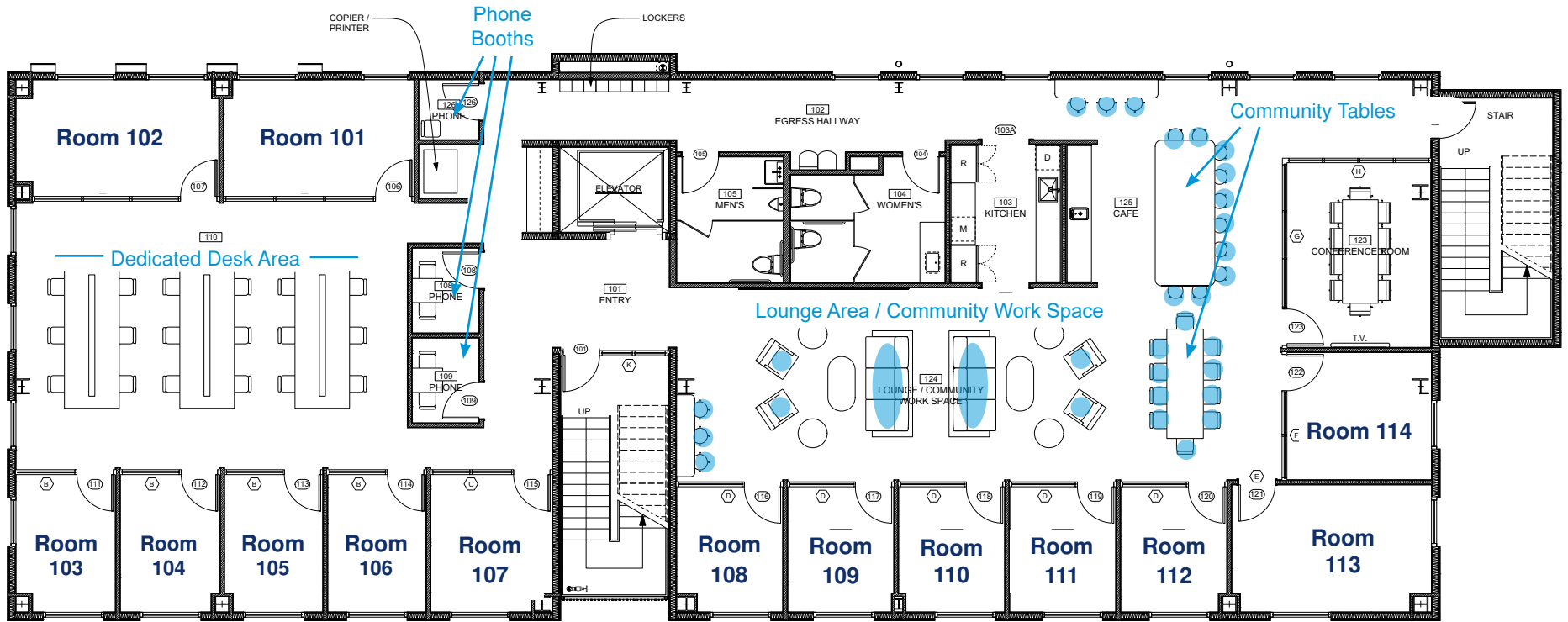
Low Aerial





Floor Plan

Ellis Oak Avenue | Parking



● Seating Available for Hot Desk

Ellis Creek



Pricing Information

Executive Office Suites

SUITES OFFERED AS:

Individual Offices

In Combination as
Multi-Room Office Configurations

USE OF MAILING ADDRESS

USE OF CONFERENCE ROOM

8 Hours per Month
(additional conference room time available
for a fee)

FURNISHED OPTION

Office can be furnished with power stand-up desk
workstation for an additional fee

Dedicated Desk

DEDICATED DESK SPACE

PRIVATE, LOCKABLE FILE CABINET

USE OF MAILING ADDRESS

USE OF CONFERENCE ROOM

5 Hours per Month
(rent includes one use/month; additional
conference room time is available for a fee)

STORAGE LOCKER

USE OF PHONE BOOTHS

Hot Desk

FLOATING WORKSPACE

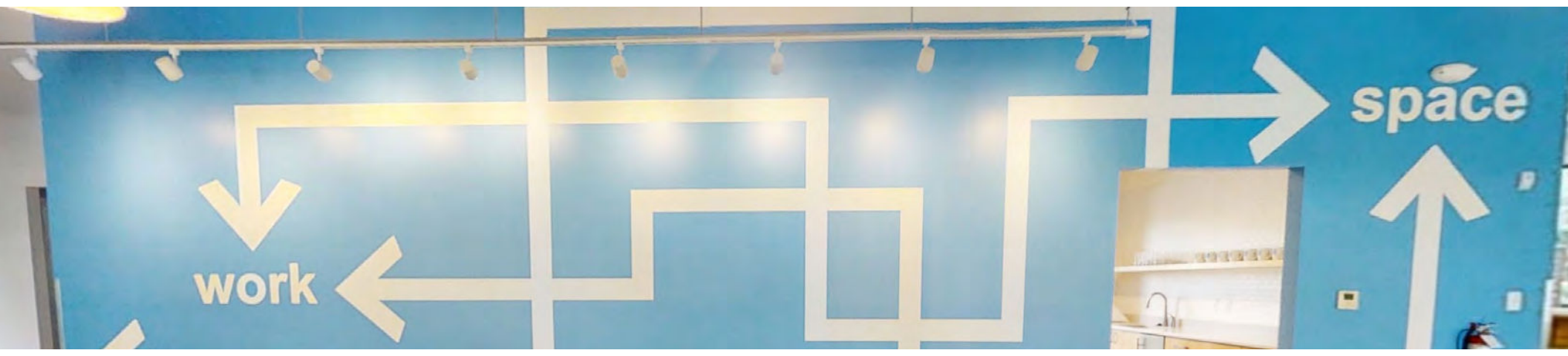
(available in cafe area, community table,
lounge area, and various bar tables)

STORAGE LOCKER

USE OF PHONE BOOTHS

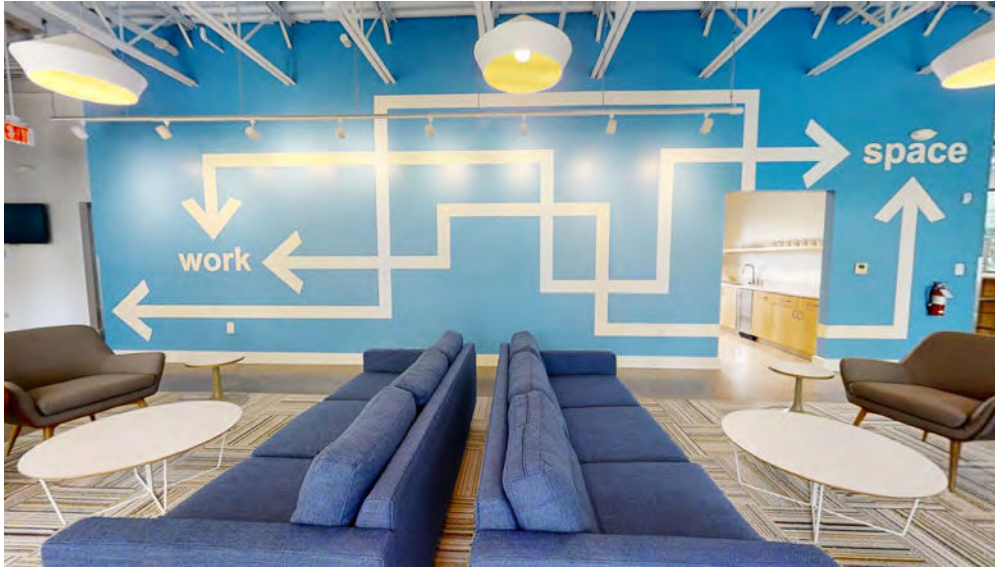
À LA CARTE OPTIONS:

Mailing Address
Access to Conference Room



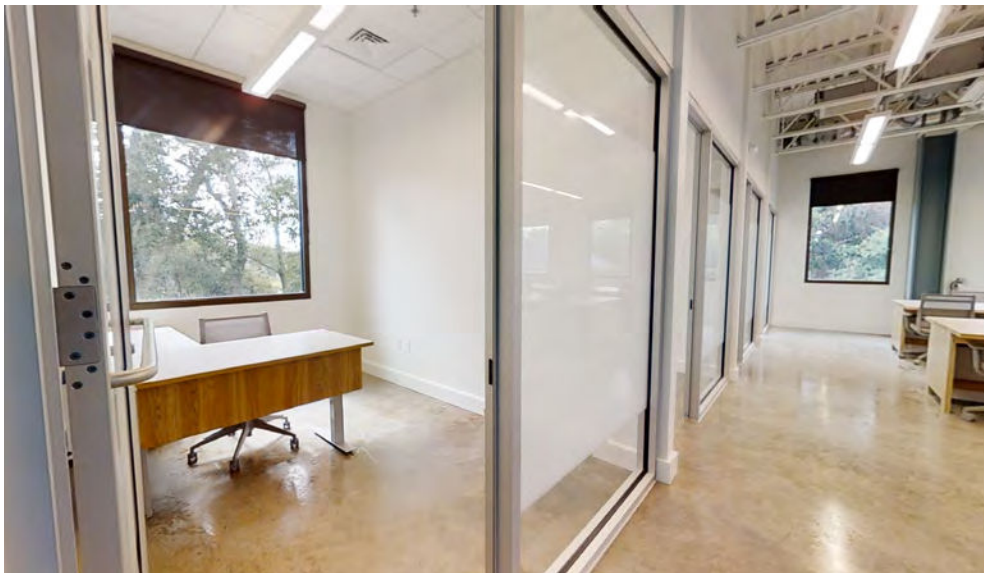


Photos

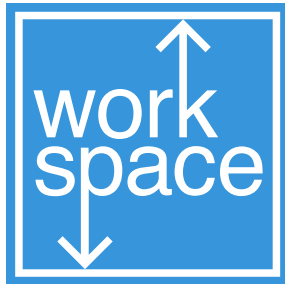




Photos



About Us



Give your business room
to grow.

workspace provides a
place to think, work, meet,
dream, and get it done.

FOR FURTHER INFORMATION

LAUREN A. WATKINS, ASSOCIATE

843.224.3990 | lwatkins@twinriverscap.com



KEITH MAYFIELD, SR ASSOCIATE

843.437.0720 | kmayfield@twinriverscap.com



656 Ellis Oak Ave. Suite 201
Charleston, SC 29412

www.twinriverscap.com

a property by

**Twin Rivers
Capital**

Twin Rivers Capital, LLC is a privately held real estate investment, development and brokerage company, founded in 2002 and headquartered in Charleston, SC. Focusing on the growth regions of the Southeastern US, TRC provides national retailers with a comprehensive solution for adding new locations. TRC has developed more than 1.3 million SF of real estate with values of over \$230 million. TRC also handles third party brokerage, including tenant and landlord representation and investment brokerage services. TRC is active in FL, GA, SC, NC, VA, MD, TN and AL.

Build to Suit • Preferred Developer for National Retailers • Brokerage • Fee Development Programs